

MCL-Technologies

Sample “Grid” –Project Notes

Copyright MCL-Technologies ©2015

All Rights Reserved





Contents

Overview	1
Project Description.....	2
Application workflow	2
Option A	2
Option B	5
Option C	7
Option D	7

Overview

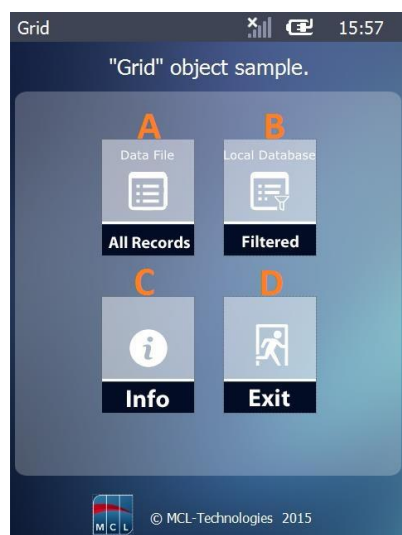
The purpose of this document is to provide an explanation for certain screens/related options concerning this application sample and to offer a few tips on *MCL-Designer V4* application development.

Project Description

This application sample intends to illustrate a few simple and effective uses of the “Grid” control:

- The control’s use of two different data sources (a data file and a local database).
- The control as a filter (with the use of a query/where clause).
- The control as data display and data editor (the “Grid” control is used as a “shopping list”).

Application Workflow



This is the first screen (*S:Welcome*).

It includes 4 “Display Image” controls, each with a “Go to” process triggered by an “On Click” event.

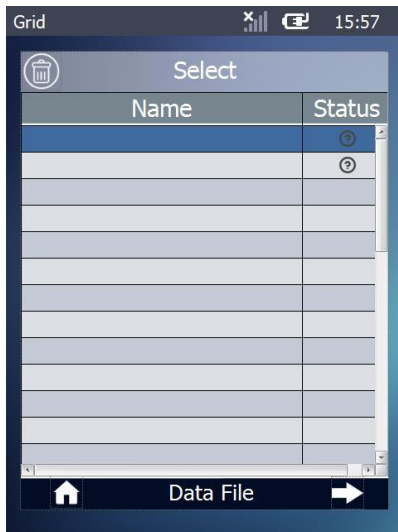
Each option redirects the application’s workflow:

- A** – Target screen is *S:Data_File* (“Grid” control with a data file for a data source)
- B** – Target screen is *S:Local_DB* (“Grid” control with a local database for a data source).
- C** – Target screen is *S:Info1* (provides info on application).
- D** – Exit the application.



Instead of a “Button” to redirect the application’s flow (with a *Branch* process), use a “Display Image” control.

Option A



S:Data_File

This screen contains a “Grid” (with a customized style) that displays data file fields. The purpose is to view data, to edit the information (the selecting/unselecting/deleting of listed items) and to update the corresponding source data file field.

“Grid” – is used to display selected data file fields. This is achieved via a customized layout designed to include images (with the use of a <Conditional Value> condition) and the appropriate fields.

“Display Image” (*Delete_img*) – Its combined use with the “Grid” control enables the deleting of data file fields displayed in the “Grid”.

“On Change” event of the “Grid” control

The “File Read a Record” process reads the defined data file fields and updates the corresponding variables. The default local variable “L_Record_Number” (in the “Select” option) stores the number of the currently selected record.

The “Case & Branch” process (appropriate for multiple value verification) verifies the status of the selected value contained in the “P_Read_Select” variable and redirects the workflow depending on found status:

- “0” – item ready for selection - “SELECT” label.
- “1” – an already selected item becomes unselected – “UNSELECT” label.
- “2” – item ready for deletion – “DELETE_RECORD” label.



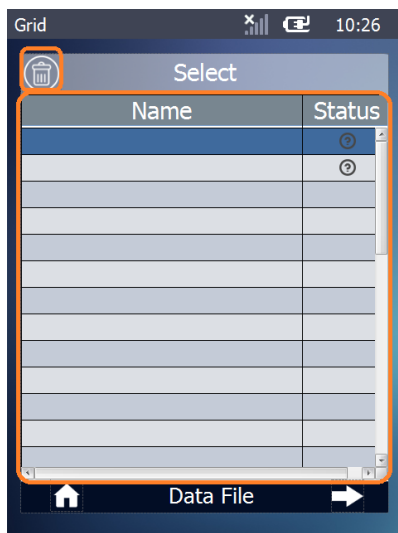
When using a series of labels to redirect application workflow, end each label process execution with a “Go to: <End of Action/Routine>”.

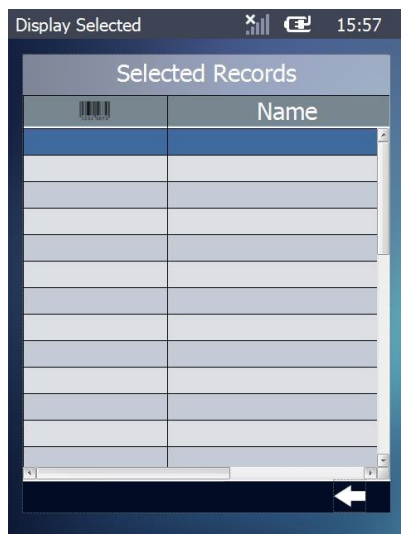
“On Click” event of the “Display Image” control (*Delete_img*)

The “P_Read_Select” variable is read/updated with the “File Read a Record” process. Its value is, then, tested with a “Test & Branch” process (appropriate for one value verification). Depending on its current value/status, the application is redirected to the available labels:

- “2” – “UPDATE_LOOP_STOP_DELETE” label. The status is maintained.
- “<2” – “SAVE_SELECTED” label – the current status (“0” or “1”) is saved into a temporary data file (“Products_Temp.DAT”) and, then changed to “2”.

The *Right.img* “Display Image” control includes a “File Seek Record(s)” associated to a “Go to: S:Display_Selected_DF” to be executed, if the “<Products.Selected>” data file field equals “1”. If not, the workflow is redirected to the “ITEMS_NOT_SELECTED” label.





S:Display_Selected_DF

The screen contains a “Grid” control displaying filtered data file records. The filter is provided by the “Where” clause in the “Query” tab (only data file fields of the “Selected” column with a value equal to “1” are displayed, meaning, the selected items of the “Grid” control in *S:Data_File*).

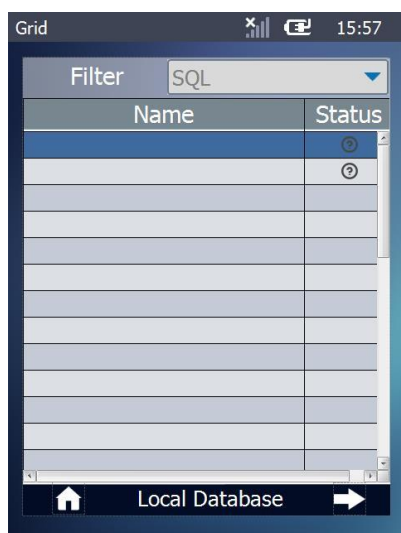
One of the “Grid” control’s column titles was replaced by an image resource (a barcode).The “Insert Icon” option (in the control’s *properties* window) was used.

This screen provides 2 ways to redirect the application workflow:

- A “Display Image” control with a “Go to: S:Data_File” process added to its “On Click” event
- An “On Hotkey <CLEAR>” event, added to the screen, with a “Go to: <Exit>” to exit the application.

Option B

S:Local_DB



This screen contains a “Combo Box” and a “Grid”. The purpose is to view and select data.

“Combo Box” – is used to select and filter the local database table records to be displayed in the following “Grid”. It reads/displays a table field of the source local database. The user’s selection is saved into the “P_Read_Type” variable.

“Grid” – is used to display the local database table records that were filtered in the control’s “Query” tab using the “P_Read_Type” variable (with the value selected in the “Combo Box”).

The “Grid” control’s style is customized. It was created to include/display the appropriate table field (“Name”) and include images (with the use of a <Conditional Value> condition).

The item selection (ID number of the selected line) is stored in the “P_Product_ID” variable.

“On Change” event of the “Grid” control

The “Local Database Select Record” process reads the defined table field and updates the corresponding variable. Its “Where” clause (in the “Query” tab) ensures that the table field being read is the selected one.



Instead of creating a variable (“P_record_Nbr”) “, you can use the default local variable (“L_Record_Number”)

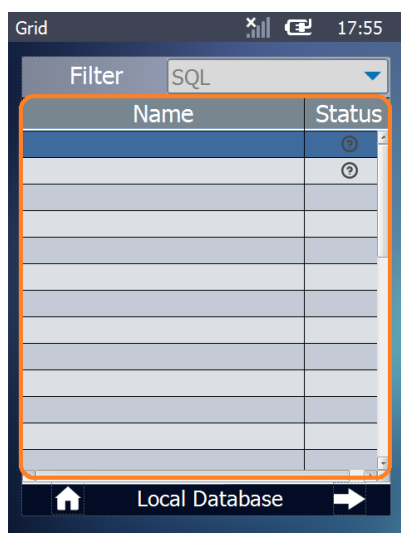
Another option is a “Get Property” process. Add this process prior to the “Local Database Select Record” and use it to get a value and store it in a variable. This variable is, then, defined as search criterion in the “Local Database Select Record” process.

The “Case & Branch” process (appropriate for multiple value verification) verifies the value/status of the selected value contained in the “P_Read_Select” variable and redirects the workflow depending on found value/status:

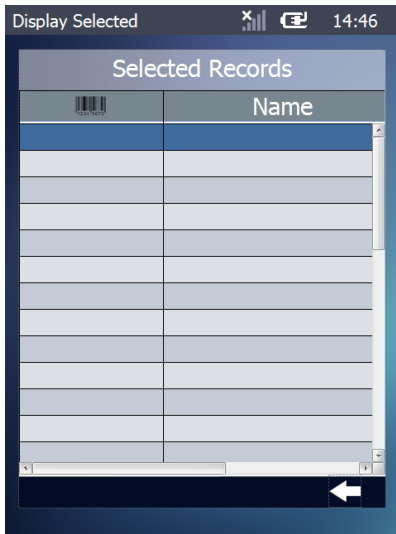
“0” – item ready for selection - “SELECT” label.

“1” – an already selected item becomes unselected – “UNSELECT” label.

Each label leads to the update of the read table field.



The *Right.img* “Display Image” control includes a “Local Database Select Record” associated to a “Go to: S:Display_Selected_LDB” to be executed, if the “Selected” table field equals “1”. If not, the workflow is redirected to the “ITEMS_NOT_SELECTED” label.



S:Display_Selected_LDB

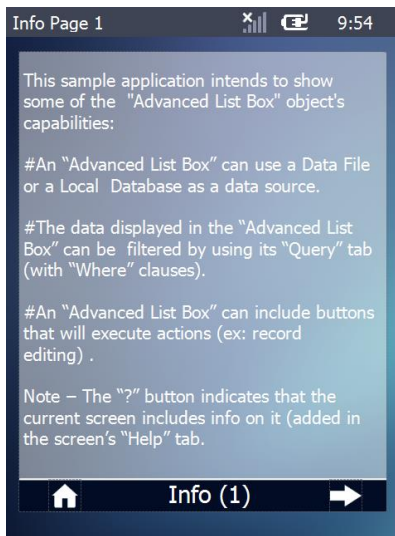
The screen contains a “Grid” control displaying filtered table field data. The filter is provided by the “Where” clause in the “Query” tab (only table fields of the “Selected” column with a value equal to “1” are displayed, meaning, the selected items of the “Grid” control in *S:Local_DB*).

One of the “Grid” control’s column titles was replaced by an image resource (a barcode).The “Insert Icon” option (in the control’s *properties* window) was used.

This screen provides 2 ways to redirect the application workflow:

- A “Display Image” control with a “Go to: S:Local_DB” process added to its “On Click” event
- An “On Hotkey <CLEAR>” event, added to the screen, with a “Go to: <Exit>” to exit the application.

Option C



S:Info1

This screen includes a "Display Text" control with info on the application.

It also contains "Display Image" controls. Clicking these controls redirects the application to the main menu or to the second page of information on the application.

Option D

Clicking the "Exit" "Display Image" control which contains a "Go to <Exit>" closes the application.